

INDEX

- ▶ **190** Basics Color Program
- ▶ **196** Product Listing
- ▶ **207** Product Warranty
- ▶ **208** Sustainability

BASICS COLOR PROGRAM

ELIGIBLE TABLES

Basics line computer tables, training tables, and student desks are available in any laminate, paint, and trim option offered by Bretford on orders as few as ten for no additional cost. The following table lines are eligible for the Basics Color Program. All applicable accessories are available through the Color Program when ordered with tables. SmartDeck Tables are not included in the Program.



**CONNECTIONS SERIES COMPUTER TABLES
AND STUDENT DESKS**
(EXCLUDING SMARTDECK)



**QUATTRO SERIES COMPUTER TABLES,
ACTIVITY TABLES AND STUDENT DESKS**



CR SERIES TRAINING ROOM TABLES



KR SERIES TRAINING ROOM TABLES

BASICS COLOR PROGRAM

HOW TO ORDER

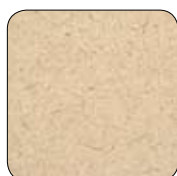
The key to ordering tables through the Basics Color Program is to include the premium finish code for the paint, laminate, and trim at the end of the model number. See examples below. We recommend you also describe the individual color option in the order description for clarity.

If you have questions please contact our Customer Service Department at 800.521.9614.

FINISHES

The following pages list the finish options available from Bretford. You can also find these options and request physical samples at BRETTFORD.com.

Finish options are subject to change, without notice.



Wheat Laminate



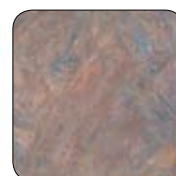
Anthracite
Paint and Trim

Connections Flat Panel Example

Anthracite paint (AN), Wheat pattern laminate (2X) and Anthracite trim (A).

35FS69 - AN - 2X - A

Model No. Paint Laminate Trim



Crayon Laminate



Topaz Paint and Trim

Quattro Voltea Example

Topaz paint (TZ), Crayon pattern laminate (201) and Topaz trim (T).

QFT2460 - TZ - 201 - T

Model No. Paint Laminate Trim

BASICS COLOR PROGRAM CONDITIONS

For your order to be eligible for the Basics Color Program and not receive the special finish set-up charge, it must meet the following conditions:

- 1 Your order must have a minimum of ten tables from the same product series: Connections, Quattro, KR Series or CR Series.
- 2 Orders with multiple table series included must have a minimum of ten tables in each series. For example, four KR tables would not qualify when combined with ten Quattro tables on the same order. The KR tables would be subject to a special finish set-up charge.
- 3 Finishes must be the same for all tables within the order.
- 4 Basics Color Program table and accessory orders receive a 20-day rolling lead time.
- 5 Accessory items must be included at the time the tables are ordered or they will receive a special finish set-up charge. Accessories do not count as part of the ten table minimum.
- 6 Additional table orders, of any size or quantity, are accepted without a set-up charge for 1-year from the date of the original order. Tables must be in the same finish combinations and for the same installation.
- 7 Products ordered through the Basics Color Program are custom and may not be returned.

BASICS PREMIUM FINISHES

Products available through the Basic Color Program may be ordered in any of the finishes shown here. Additionally, there are many products available by special order in any Bretford laminate, paint, or trim color that are not included in the Basics Color Program. Please contact **Bretford Customer Service** at 800.521.9614 for pricing and lead time.

Finishes are subject to changes due to manufacturer discontinuations. For the most up-to-date finish offering from Bretford, please visit BETFORD.com.

The following Premium Finishes are available:

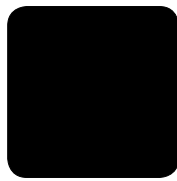
POWDER PAINTS



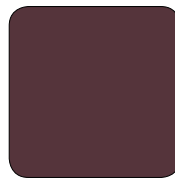
Aluminum (AL)



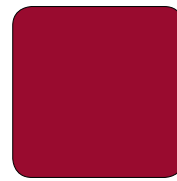
Anthracite (AN)



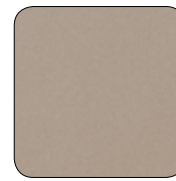
Black Pumice (BP)



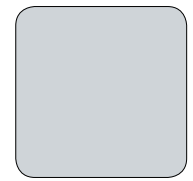
Cabernet (CB)



Cardinal (CD)



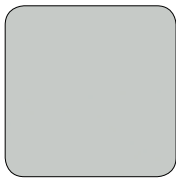
Champagne (CH)



Concrete (CT)



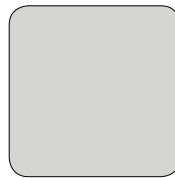
Eiffel (EF)



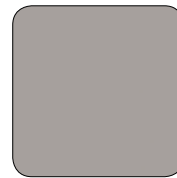
Folkstone Grey (8Q)



Graphite (G1)



Grey Mist (GM)



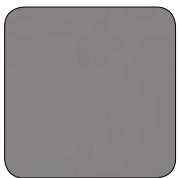
Inner Tone Light (HF)



Karma (KM)



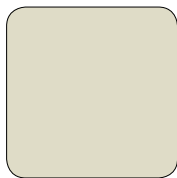
Medium Tone (MT)



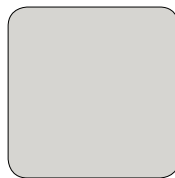
Metallic Bronze (EH)



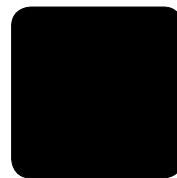
Polo (PL)



Putty Beige (PB)



Quartz (QZ)



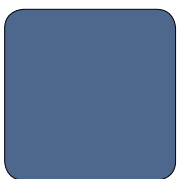
Raven (RN)



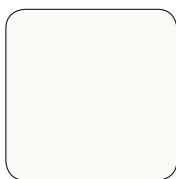
Slate Grey (SG)



Topaz (TZ)



Twilight (TW)



White (91)

BASICS PREMIUM FINISHES

TRIM OPTIONS

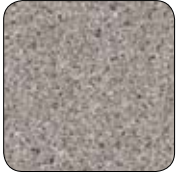


SOLID LAMINATES



BASICS PREMIUM FINISHES

PATTERN LAMINATES



Ash Fiesta (103)



Black Frosted (J8)



Bronze Legacy (O42)



Canyon Zephyr (D1)



Cardamom (7X)



Celery (3X)



Chamomile (5X)



Charcoal Essence (286)



Cinnamon (6X)



Coriander (4X)



Crayon (201)



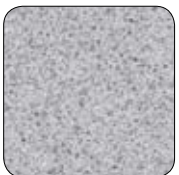
Desert Zephyr (DQ)



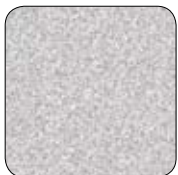
Green Legacy (144)



Grey Fiesta (104)



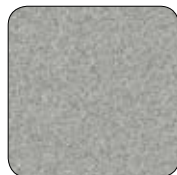
Grey Glace (102)



Grey Nebula (16)



Greystone (84-W)



Greystone (84-N)



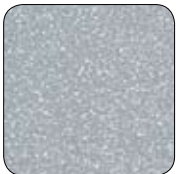
Griege Matrix (106)



Inner Tone Light Frosted (J5)



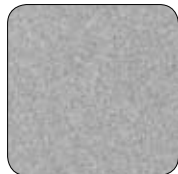
Kale (8X)



Light Grey Frosted (J4)



Medium Tone Frosted (J7)



Misted Zephyr (DC)



Navy Legacy (150)



Olive Legacy (101)



Palisades Park (108)



Slate Grey Frosted (J6)



Smoke Essence (164)



Studio White Matrix (107)



Twilight Zephyr (DF)



Vanilla (1X)



Wheat (2X)



White Fiesta (105)

BASICS PREMIUM FINISHES

WOOD LAMINATES



Aged Cherry (HX)



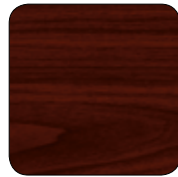
Ash (LA)



Blossom Cherry (747)



Cocoa Maple (658)



Empire Mahogany
(847)



Grand Isle Maple
(473)



Light Anigre (HP)



Mahogany (LM)



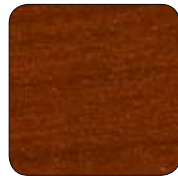
Natural Maple (HM)



Recon Oak (905)



Regency Mahogany
(336)



Select Cherry (399)



Solar Oak (075)



Sugar Maple (110)



Walnut on Cherry
(HY)



White Oak (OL)



Wild Cherry (32)