

## LECTERNS

## MOBILE MULTIMEDIA

Ideal for  Learning and  Meeting Solutions.

Our Mobile Multimedia Lecterns are designed to work with projectors, laptop computers, and document cameras.

Shelves provide space for additional equipment. Locking options are available to secure media.

And rolling casters provide easy mobility.

★ *Ideal in meeting rooms and lecture halls, these Lecterns are technology-ready to cover all your presentation needs.*



## LECT1 Projector Lectern

Features large, laminate platform top with retaining lip to hold a laptop and a shelf to hold a projector. Platform can be positioned on the left or the right and can be removed for tabletop use. Two large shelves for storage include grommets for cord management. Top shelf comes with a rubber mat. Optional CFPS 4-outlet electrical unit with 20' power cord.



## LECT2 Mobile Lectern

Features a large, angled, laminate top with a retaining lip to hold a laptop and three shelves for storage. Includes grommet holes for cord management. Optional CFPS 4-outlet electrical unit with 20' power cord.



## LECTTG Multimedia Lectern

Features a 6' TechGuard Cable Lock for securing a projector and has a lower locking cabinet. Document camera sits on a sliding, locking shelf. The front of the Lectern includes a cutout with a speaker cover for a portable public address system (not included).

Model #	W x D x H	Wt	Projector Shelf	Lectern Platform	Lectern Platform Angle	Sliding Shelf	Caster Size
• LECT1	30" x 18" x 45"	106 lbs	15" W x 18" D	18"W x 20 <sup>3/4</sup> "D	12 <sup>1/2</sup> °	-	2"
• LECT2	24" x 16" x 45"	80 lbs	-	26"W x 18"D	12 <sup>1/2</sup> °	-	2"
• LECTTG	30" x 18" x 45"	139 lbs	15" W x 18" D	18"W x 20 <sup>3/4</sup> "D	12 <sup>1/2</sup> °	28 <sup>1/4</sup> " x 8 <sup>3/4</sup> " x 8 <sup>1/4</sup> "	2"

See pages 192-195 for special order colors. Additional costs and longer lead times may apply.



Grey Mist/Grey Mist  
(-GMGM)



Grey Mist/Raven  
(-RNGM)



Grey Mist/Topaz  
(-TZGM)



Grey Mist/Aluminum  
(-ALGM)



Cherry/Raven  
(-RNCY)



Oak/Raven  
(-RNBO)



Maple/Putty Beige  
(-PBMP)



Grey Nebula/Raven  
(-RNNB)



Cherry/Aluminum  
(-ALCY)

# LECTERNS MOBILE MULTIMEDIA

Ideal for  Learning and  Meeting Solutions.



**+** *Series 700 Large Format Electric Wall Screen, page 112;  
Connections SmartDeck, page 132*

## LECTTG3018

Same features as LECTTG. Also includes a surge and overload-protected, 6-outlet electrical strip.

Model #	W x D x H	Wt	Projector Shelf	Lectern Platform	Lectern Platform Angle	Sliding Shelf	Caster Size	Electrical
• LECTTG3018	30" x 18" x 45"	139 lbs	15"W x 18"D	18"W x 20 <sup>1</sup> / <sub>2</sub> "D	12 <sup>1</sup> / <sub>2</sub> °	28 <sup>1</sup> / <sub>4</sub> " x 8 <sup>3</sup> / <sub>4</sub> " x 8 <sup>1</sup> / <sub>4</sub> "	2"	6 Outlets

**F** *Available finishes on page 182.*

## LECTERNS

## STATIONARY STANDING HEIGHT

Ideal for  Learning and  Meeting Solutions.

Our Stationary Standing Height Lecterns feature wide bases for stability and an angled top with a retention lip for presentation materials.

- ★ Ready to hold your papers when you speak to the crowd in classrooms or assembly halls.



## LECT3 Floor Lectern With Shelf

Features a 3" H storage shelf for presentation materials. Constructed out of steel.



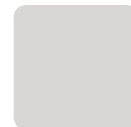
## LECT4 Floor Lectern

Features all steel construction.

Model #	W x D x H	Wt	Lectern Platform	Viewing Angle	Storage Shelf
• LECT3	23" x 12 <sup>1</sup> / <sub>2</sub> " x 47"	52 lbs	23"W x 12 <sup>1</sup> / <sub>2</sub> "D	9°	22"W x 12"D x 3"H
• LECT4	23" x 12 <sup>1</sup> / <sub>2</sub> " x 47"	31 lbs	23"W x 12 <sup>1</sup> / <sub>2</sub> "D	12 <sup>1</sup> / <sub>2</sub> °	-



See pages 192-195 for special order colors. Additional costs and longer lead times may apply.



Grey Mist (-GM)



Black (-BK)



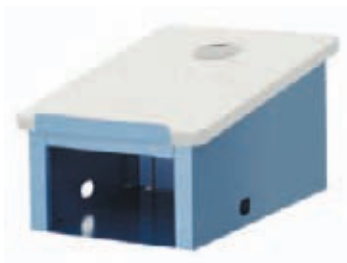
Topaz (-TZ)

# LECTERNS TABLETOP

Ideal for  Learning and  Meeting Solutions.

Our Tabletop Lecterns can assist a presentation at any table.

★ Prop it up on any table to assist lectures in classrooms and lecture halls.

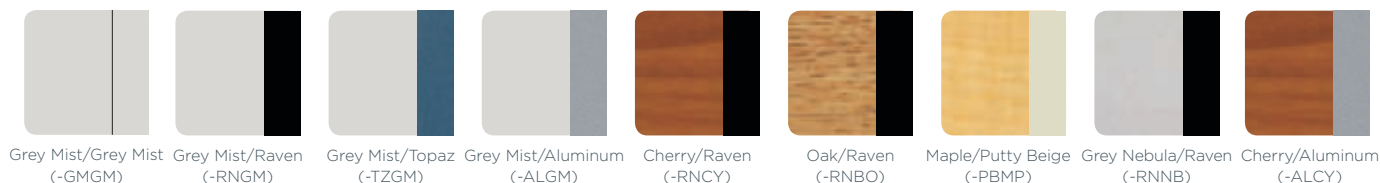


## LECT5 Deluxe Tabletop Lectern

Features a steel body with storage space, rubber feet, and a laminate top.

Model #	W x D x H	Wt	Lectern Platform	Lectern Footprint	Viewing Angle	Storage Shelf
• LECT5	18" x 20 <sup>3/4</sup> " x 13 <sup>1/2</sup> "	45 lbs	18"W x 20 <sup>3/4</sup> "D	15"W x 17 <sup>3/4</sup> "D	12 <sup>1/2</sup> °	12" W x 17 <sup>1/2</sup> " x 6 <sup>1/4</sup> "

See pages 192–195 for special order colors. Additional costs and longer lead times may apply.



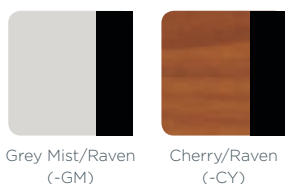
# HEIGHT-ADJUSTABLE

Ideal for  Learning and  Meeting Solutions.

Our Height-Adjustable Lecterns easily tilt and adjust to accommodate a variety of users.

★ Easy height-adjustment makes this Lectern perfect for users in shared classrooms and presentation rooms.

See pages 192–195 for special order colors. Additional costs and longer lead times may apply.



## CR8503 Lectern

Features a large platform top that rests at a 25 degree viewing angle. Lectern is height-adjustable from 40"–51" to accommodate a variety of presenters.

Model #	W x D x H	Wt	Platform	Viewing Angle
• CR8503	22" x 20 <sup>1/4</sup> " x 40-51"	30 lbs	18 <sup>1/4</sup> " x 16 <sup>1/2</sup> "	25°

# LECTERNS AND EASELS ANALYSIS CHARTS

You can use the following charts to view our range of products and to compare their features and benefits.



## MOBILE MULTIMEDIA

Model #	W x D x H	Wt	Projector Shelf	Lectern Platform	Lectern Platform Angle	Sliding Shelf	Caster Size	Electrical
• LECT1	30" x 18" x 45"	106 lbs	15"W x 18" D	18"W x 20 <sup>3/4</sup> "D	12 <sup>1/2</sup> °	-	2"	-
• LECT2	24" x 16" x 45"	80 lbs	-	26"W x 18"D	12 <sup>1/2</sup> °	-	2"	-
• LECTTG	30" x 18" x 45"	139 lbs	15"W x 18"D	18"W x 20 <sup>3/4</sup> "D	12 <sup>1/2</sup> °	28 <sup>1/4</sup> " x 8 <sup>3/4</sup> " x 8 <sup>1/4</sup> "	2"	-
• LECTTG3018	30" x 18" x 45"	139 lbs	15"W x 18"D	18"W x 20 <sup>1/2</sup> "D	12 <sup>1/2</sup> °	28 <sup>1/4</sup> " x 8 <sup>3/4</sup> " x 8 <sup>1/4</sup> "	2"	6 Outlets



## STATIONARY STANDING HEIGHT

Model #	W x D x H	Wt	Lectern Platform	Viewing Angle	Storage Shelf
• LECT3	23" x 12 <sup>1/2</sup> " x 47"	52 lbs	23"W x 12 <sup>1/2</sup> "D	9°	22" W x 12" D x 3" H
• LECT4	23" x 12 <sup>1/2</sup> " x 47"	31 lbs	23"W x 12 <sup>1/2</sup> "D	12 <sup>1/2</sup> °	-



## TABLETOP

Model #	W x D x H	Wt	Lectern Platform	Lectern Footprint	Viewing Angle	Storage Shelf
• LECT5	18" x 20 <sup>3/4</sup> " x 13 <sup>1/2</sup> "	45 lbs	18"W x 20 <sup>3/4</sup> "D	15"W x 17 <sup>3/4</sup> "D	12 <sup>1/2</sup> °	12" W x 17 <sup>1/2</sup> " x 6 <sup>1/4</sup> "



## HEIGHT-ADJUSTABLE

Model #	W x D x H	Wt	Platform	Viewing Angle
• CR8503	22" x 20 <sup>1/4</sup> " x 40-51"	30 lbs	18 <sup>1/4</sup> " x 16 <sup>1/2</sup> "	25°



## FOLDING EASEL

Model #	W x D x H	Wt
• CR8504	29 <sup>1/2</sup> " x 10 <sup>1/2</sup> " x 70 <sup>1/4</sup> "	48 lbs
• WMK1-GM	19 <sup>3/4</sup> " x 1" x 3"	1.5 lbs