

FLAT PANEL MOUNTS: <32"

DESK-MOUNTED

Ideal for  Learning and  Working Solutions.

Our Desk Mounts are available in clamp-on or bolt-through designs to hold small flat panel monitors and to provide you with more work space. Single or dual-arm mounts and VESA compliant models ensure mounts will fit with virtually any monitor. Mounts easily rotate for portrait or landscape viewing and tilt to minimize glare. Cord management is included.

★ Easily attaches to desks to increase available workspace in classrooms, labs and office environments.



+ UCS880 Multimedia Workstation, page 78

FLAT PANEL MOUNTS: <32" DESK-MOUNTED

Ideal for  Learning and  Working Solutions.



FPSM-D-ADJ1-AL
FPSM-D-ADJ1XX-AL
Adjustable Single-Arm Desk Mounts

Clamps to an edge, through a grommet hole, or can bolt down through the desktop. Features 360° swivel, left/right angle adjustment, tool-free adjustment from landscape to portrait format and cord management.



FPSM-D-ADJ2-AL
FPSM-D-ADJ2XX-AL
Adjustable Dual-Arm Desk Mounts

Clamps to an edge, through a grommet hole, or can bolt down through the desktop. Features 360° swivel, left/right angle adjustment, tool-free adjustment from landscape to portrait format and cord management. Includes a 6" monitor extension.



Model #	Monitor Wt	LCD Size	Tilt	P/L Rotation	Pan	Lift
• FPSM-D-ADJ1-AL	15 lbs	< 19"	+/- 45°	360°	180°	< 7"
• FPSM-D-ADJ1XX-AL	15-30 lbs	< 24"	+/- 45°	360°	180°	< 7"
• FPSM-D-ADJ2-AL	15 lbs	< 19"	+/- 45°	360°	180°	< 7"
• FPSM-D-ADJ2XX-AL	15-30 lbs	< 24"	+/- 45°	360°	180°	< 7"



FLAT PANEL MOUNTS: <32"

WALL-MOUNTED

Ideal for  Learning,  Meeting, and  Working Solutions.

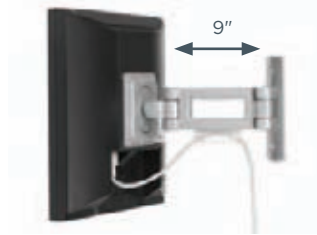
Our Wall Mounts attach small monitors directly to the wall or on a swing-out arm. Single or dual-arm mounts are available to provide a secure connection for monitors up to 30 lbs. Multiple Display Mounts can hold up to six monitors that attach to one mount for multiple monitor viewing.

★ Mounting directly to the wall creates optimal viewing in classrooms, offices, and meeting rooms.



FPSM-W-0-AL Low Profile Wall Mount

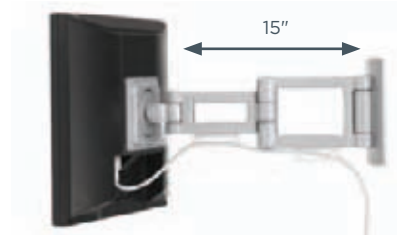
Extends monitor 3" from the wall and provides 90 degree left/right positioning. Monitor easily rotates from landscape to portrait views without tools.



FPSM-W-1-AL Low Profile Wall Mount

Extends monitor 9" from the wall with one 6" extension arm and provides 120 degree left/right positioning. Includes a cord management clip. Monitor easily rotates from landscape to portrait views without tools.

Product design and features patented by Bretford Manufacturing, Inc.



FPSM-W-2-AL Low Profile Wall Mount

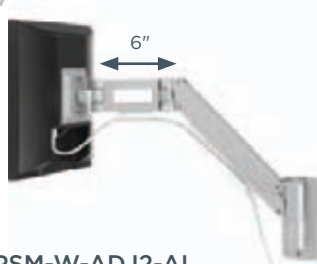
Extends monitor 15" from the wall with two extension arms, each 6" long. Provides 120 degree left/right positioning. Includes two cord management clips. Monitor easily rotates from landscape to portrait views without tools.

Product design and features patented by Bretford Manufacturing, Inc.



FPSM-W-ADJ1-AL FPSM-W-ADJ1XX-AL Adjustable Single-Arm Wall Mount

Extends monitor up to 18" from the wall with 14" height-adjustment. Provides 180 degree left/right positioning and comes with cord management clips. Monitors easily rotate from landscape to portrait views without tools.



FPSM-W-ADJ2-AL FPSM-W-ADJ2XX-AL Adjustable Dual-Arm Wall Mount

Extends monitor up to 24" from the wall with 14" height-adjustment. Provides 180 degree left/right positioning and comes with cord management clips. Monitor easily rotates from landscape to portrait views without tools.

Product design and features patented by Bretford Manufacturing, Inc.



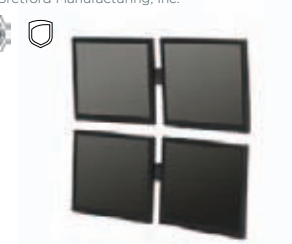
FPSM-W-DIS2-AL Single Level-Wall - 2 Monitors

Holds two small monitors up to 21", side by side. Each monitor is independently attached to the mount with a knuckle that rotates for the appropriate viewing angle.



FPSM-W-DIS3-AL Single-Level Wall - 3 Monitors

Adjustable mount holds three monitors up to 19", side by side. Each monitor is independently attached to the mount with a knuckle that rotates for the appropriate viewing angle.



FPSM-W-DIS4-AL Double-Level Wall - 4 Monitors

Adjustable mount holds four monitors up to 21", two up and two across. Each monitor is independently attached to the mount with a knuckle that rotates for the appropriate viewing angle.



FPSM-W-DIS6-AL Double-Level Wall - 6 Monitors

Adjustable mount holds six 19" monitors, two up and three across. Each monitor is independently attached to the mount with a knuckle that rotates for the appropriate viewing angle.



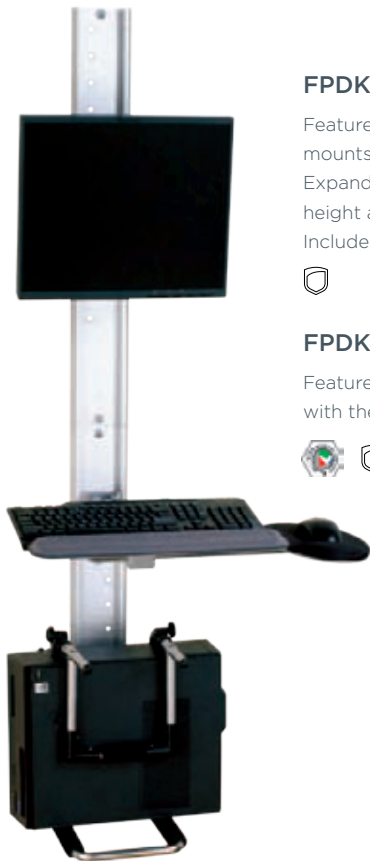
FLAT PANEL MOUNTS: <32" WALL-MOUNTED

Ideal for  Learning and  Working Solutions.

 Great for use in patient rooms, schools and libraries.



FPDK01



FPDK02

FPDK01 Digital Wall Kiosk

Features a 31" vertical track with adjustable monitor and keyboard mounts that slide independently on the track for optimal positioning. Expandable keyboard tray folds up and out of the way. Monitor is height and tilt-adjustable and rotates to portrait or landscape views. Includes left or right handed mouse pad with mouse holder.



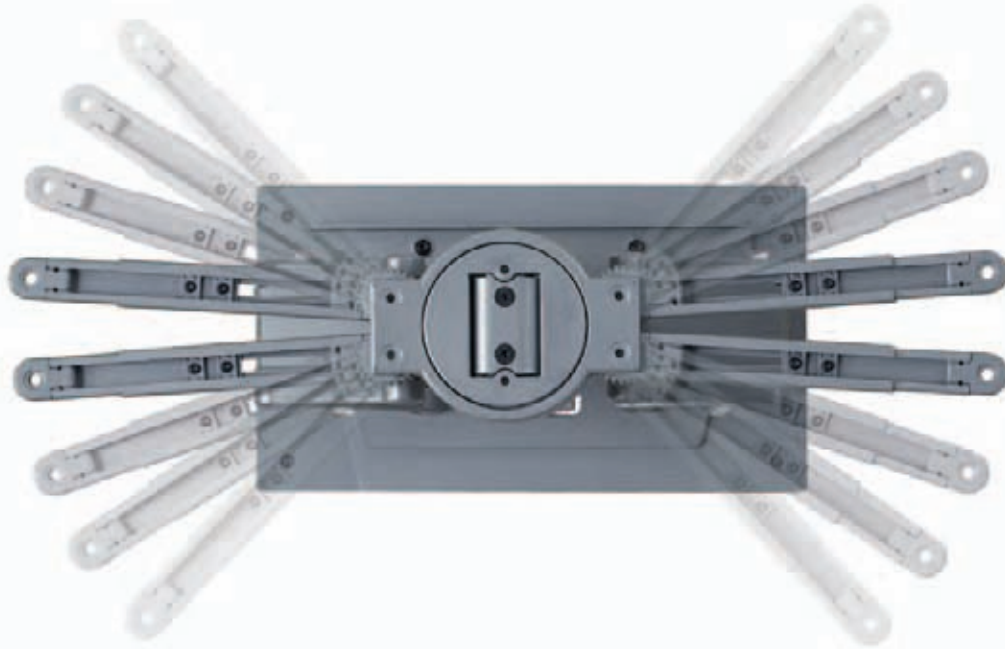
FPDK02 Digital Wall Kiosk with CPU holder

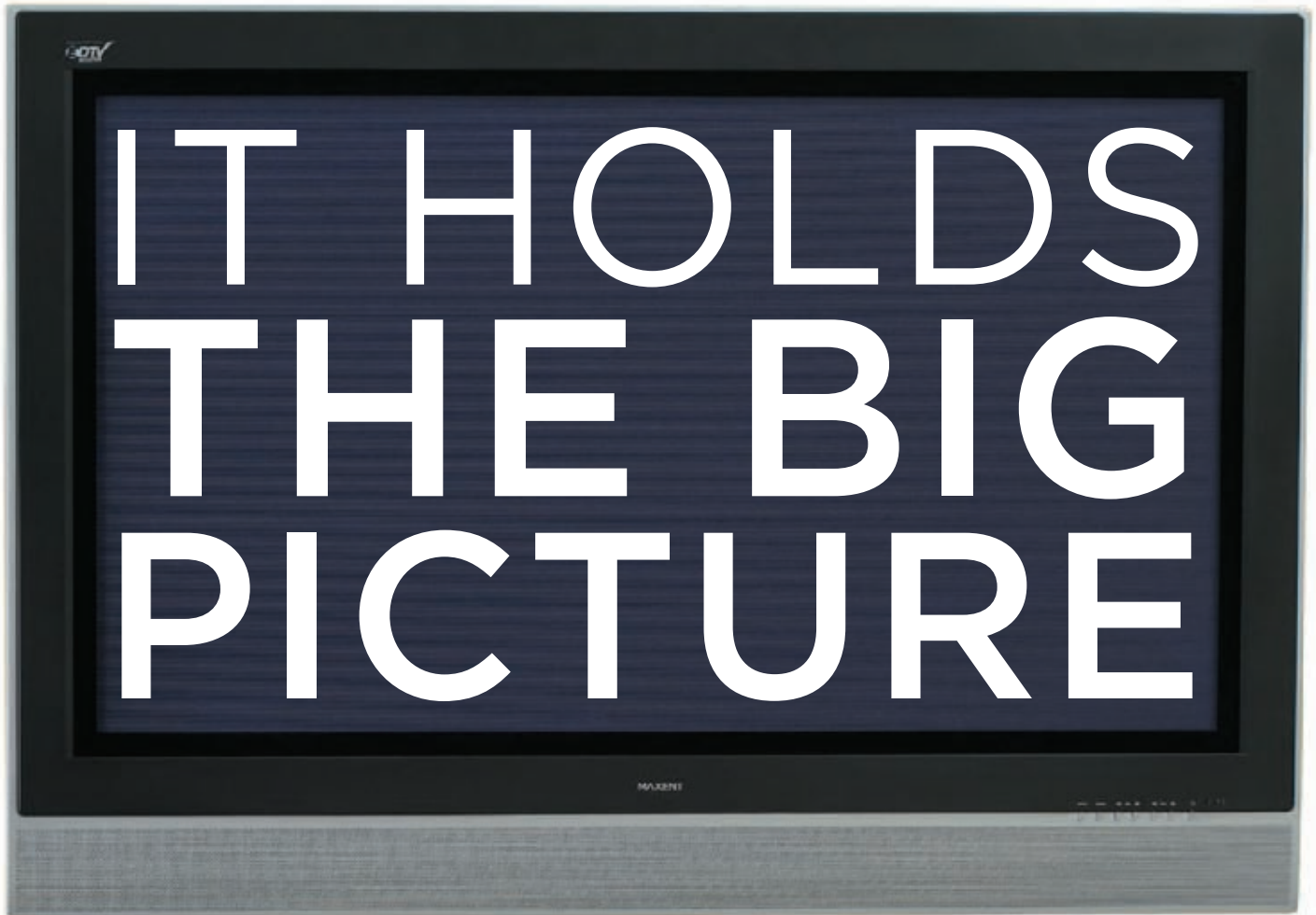
Features a 63" vertical track. Includes same features as FPDK01 with the addition of a 3" to 8 1/4" W adjustable CPU holder.



Model #	Monitor Wt	LCD(s)	LCD Size	Tilt	P/L Rotation	Pan	Lift	Depth to Wall
• FPSM-W-0-AL	< 30 lbs	1	< 30"	+/- 45°	360°	90°	-	3"
• FPSM-W-1-AL	< 30 lbs	1	< 30"	+/- 45°	360°	120°	-	9"
• FPSM-W-2-AL	< 30 lbs	1	< 30"	+/- 45°	360°	180°	-	15"
• FPSM-W-ADJ1-AL	15 lbs	1	< 19"	+/- 45°	360°	180°	< 14"	< 18"
• FPSM-W-ADJ1XX-AL	15-30 lbs	1	< 30"	+/- 45°	360°	180°	< 14"	< 18"
• FPSM-W-ADJ2-AL	15 lbs	1	< 19"	+/- 45°	360°	180°	< 14"	< 24"
• FPSM-W-ADJ2XX-AL	15-30 lbs	1	< 30"	+/- 45°	360°	180°	< 14"	< 24"
• FPSM-W-DIS2-AL	< 30 lbs	2	< 21"	+/- 45°	360°	40°	-	8"
• FPSM-W-DIS3-AL	< 30 lbs	3	< 19"	+/- 45°	360°	40°	-	8"
• FPSM-W-DIS4-AL	< 30 lbs	4	< 21"	+/- 45°	360°	40°	-	8"
• FPSM-W-DIS6-AL	< 30 lbs	6	< 19"	+/- 45°	360°	40°	-	8"
• FPDK01	25 lbs	1	< 24"	+/- 45°	360°	90°	- 9" (monitor)/20 1/2" (keyboard)	
• FPDK02	25 lbs	1	< 24"	+/- 45°	360°	90°	- 9" (monitor)/20 1/2" (keyboard)	







BRETFORD'S MOUNTS FOR LARGE
FLAT PANEL MONITORS ARE UNIVERSAL
AND  VESA COMPLIANT.

Eliminate the stress of finding a mount that fits. Bretford's mounts adjust to fit **monitors up to 61"**. Ceiling or wall options can be easily installed wherever you need them. You handle the big picture We'll handle the details.

FLAT PANEL MOUNTS: 32"-61" CEILING-MOUNTED

Ideal for  Learning and  Meeting Solutions.

Our Ceiling Mounts for large flat panels fit most monitors up to 61" diagonal. Mounts are easy to install with universal mounting arms that keep mounting holes synchronized during the assembly process. A one-handed tilt feature allows for easy forward tilt.

Poles for mounts are available from 36"-72" long and are sold separately.

★ *Easy, forward tilt function allows for flexible viewing options in conference rooms and meeting areas.*



FPCM-1-AL Single Monitor Universal Flat Panel Ceiling Mount

For diagonal monitors 42" to 61". Supports flat panel monitors up to 135 lbs.

Product design and features patented by Bretford Manufacturing, Inc.



FPCM-2-AL Dual Monitor Universal Flat Panel Ceiling Mount

For two flat panel monitors mounted back to back. For use with monitors 42" to 46" diagonal, and up to 50 lbs each or 100 lbs combined.

Product design and features patented by Bretford Manufacturing, Inc.



Pole for Dual Monitor Universal Flat Panel Ceiling Mount

For use with FPCM-1-AL or FPCM-2-AL Universal Flat Panel Ceiling Mounts. Supports up to 170 lbs, including the weight of the FPCM-1-AL or FPCM-2-AL mounting assemblies.



Model #	Length	Wt	Tilt	P/L Rotation	LCD(s)	LCD Wt	Mount Width Adjustment	Mount Height Adjustment
• FPCM-1-AL	see FPCMPOLE_	35 lbs	< 15°	360°	1	< 135 lbs	310mm-825mm	200mm-683mm
• FPCM-2-AL	see FPCMPOLE_	70 lbs	< 15°	360°	2	< 100 lbs total	310mm-825mm	200mm-683mm
• FPCMPOLE36-AL	36"	8 lbs	-	-	-	-	-	-
• FPCMPOLE48-AL	48"	12 lbs	-	-	-	-	-	-
• FPCMPOLE60-AL	60"	16 lbs	-	-	-	-	-	-
• FPCMPOLE72-AL	72"	24 lbs	-	-	-	-	-	-



FLAT PANEL MOUNTS: 32"-61" WALL-MOUNTED

Ideal for Learning and Meeting Solutions.

Wall Mounts for large flat panel monitors are designed to securely hold monitors flush to the wall.

Mounts feature a forward tilt adjustment and wood stud mounting hardware.

Perfect for viewing media on larger monitors in conference and meeting areas.



FPLM-ARM-AL Adjustable Arms Universal Flat Panel Wall Mount

For monitors up to 42" to 61" and up to 170 lbs. Allows for monitors to sit flush against the wall or extended out with left/right angle adjustment. Features 0 to -15 forward tilt. Monitor easily adjusts from landscape to portrait views without tools. Installation to 16" stud centers.

Product design and features patented by Bretford Manufacturing, Inc.



FPLM-FFP Flush Flat Panel Wall Mount

For monitors from 23" to 42" and up to 100 lbs. Mounts flush to the wall with +5 to -15 forward tilt. Landscape installation only to 16" stud centers.



FPLM-FFP2 Flush Flat Panel Wall Mount

Same features as FPLM-FFP. For monitors from 42" to 61" and up to 200 lbs. Landscape installation only to 16" or 24" stud centers.



Easy Installation

This assembly can minimize your installation frustration.

- 1 Mount the plate to the wall.
- 2 Attach the bracket to the monitor.
- 3 Lift bracket into the pocket holding the monitor.
- 4 Turn and tilt your monitor. Then lock it into position.

Extension Positions of FPLM-ARM-AL



Model #	Monitor Size	Wt	Tilt	P/L Rotation	LCD Wt	Mount Width Adjustment	Mount Height Adjustment
• FPLM-ARM-AL	42-61"	35 lbs	< 15°	360°	< 170 lbs	310mm-825mm	200mm-683mm
• FPLM-FFP	23-42"	11 lbs	< 15°	Fixed	< 100 lbs	75mm-500mm	75mm-375mm
• FPLM-FFP2	42-61"	22 lbs	< 15°	Fixed	< 200 lbs	100mm-720mm	100mm-610mm



NOT A BAD SEAT IN THE HOUSE

BRETFORD PROJECTOR CEILING AND WALL MOUNTS ARE ADJUSTABLE TO PROJECT IMAGES FROM ANY POSSIBLE ANGLE, ONTO ANY SURFACE.



Our mounts are **adjustable to fit most LCD projectors**. **Side to side, front to back,** and **360 degree rotation** allow for the perfect viewing angle. With Bretford Projector Mounts, you can project just about anywhere. So when the show must go on, it does.

PROJECTOR MOUNTS

CEILING-MOUNTED

Ideal for  Learning and  Meeting Solutions.

Our Ceiling-Mounted Projector Mounts feature flexible tilting and 360 degree rotation. Mounts fit most bottom mounted LCD projectors up to 26 lbs. Ceiling mounts can be flush-mounted or mounted on an extension tube.

★ *With 360 degree rotation, this Projector Mount is ideal in conference rooms and lecture halls.*



PROJECTOR MOUNTS

CEILING-MOUNTED

Ideal for  Learning and  Meeting Solutions.



TPMUNI4 Projector Mounts

Deluxe Projector Mounts include a 26" to 46" adjustable extension tube and quick-release mechanism for simple removal of projectors. Adjustable arms secure the projector in place using the mounting nuts built into the bottom of the projector casing.



F Available in Aluminum finish only.



TPMUNI2 Flush Projector Mounts

Flush ceiling projector mount extends down 6" from a flat ceiling and includes a quick-release mechanism that allows for simple removal of data projectors. Adjustable arms secure the projector using mounting nuts built into the underside of the projector casing.



F Available in Aluminum finish only.

Model #	Arm Length	Pitch	Roll	Yaw	Wt
TPMUNI2	6"	10°	10°	360°	3 lbs
TPMUNI4	26-46"	10°	10°	360°	8 lbs



Aluminum (-AL)

ACCESSORIES

Increase the strength and flexibility of your mounting options with some of our hardware accessories.



• TPM8PLATE Mounting Plate

The 8" wide mounting plate is designed for drop ceiling installations. Includes mounting cables and hardware with cut outs for data and power plugs. Plugs not included. Only for use with TPMUNI2 and TPMUNI4 mounts.

F Available in White finish only.



MOUNTS

ANALYSIS CHARTS

**FLAT PANEL MOUNTS <32" : DESK-MOUNTED**

Model #	Monitor Wt	LCD Size	Tilt	P/L Rotation	Pan	Lift
• FPSM-D-ADJ1-AL	15 lbs	< 19"	+/- 45°	360°	180°	< 7"
• FPSM-D-ADJ1XX-AL	15-30 lbs	< 24"	+/- 45°	360°	180°	< 7"
• FPSM-D-ADJ2-AL	15 lbs	< 19"	+/- 45°	360°	180°	< 7"
• FPSM-D-ADJ2XX-AL	15-30 lbs	< 24"	+/- 45°	360°	180°	< 7"

**FLAT PANEL MOUNTS <32" : WALL-MOUNTED**

Model #	Monitor Wt	LCD(s)	LCD Size	Tilt	P/L Rotation	Pan	Lift	Depth to Wall
• FPSM-W-0-AL	< 30 lbs	1	< 30"	+/- 45°	360°	90°	-	3"
• FPSM-W-1-AL	< 30 lbs	1	< 30"	+/- 45°	360°	120°	-	9"
• FPSM-W-2-AL	< 30 lbs	1	< 30"	+/- 45°	360°	180°	-	15"
• FPSM-W-ADJ1-AL	15 lbs	1	< 19"	+/- 45°	360°	180°	< 14"	< 18"
• FPSM-W-ADJ1XX-AL	15-30 lbs	1	< 30"	+/- 45°	360°	180°	< 14"	< 18"
• FPSM-W-ADJ2-AL	15 lbs	1	< 19"	+/- 45°	360°	180°	< 14"	< 24"
• FPSM-W-ADJ2XX-AL	15-30 lbs	1	< 30"	+/- 45°	360°	180°	< 14"	< 24"
• FPSM-W-DIS2-AL	< 30 lbs	2	< 21"	+/- 45°	360°	40°	-	8"
• FPSM-W-DIS3-AL	< 30 lbs	3	< 19"	+/- 45°	360°	40°	-	8"
• FPSM-W-DIS4-AL	< 30 lbs	4	< 21"	+/- 45°	360°	40°	-	8"
• FPSM-W-DIS6-AL	< 30 lbs	6	< 19"	+/- 45°	360°	40°	-	8"
• FDPK01	25 lbs	1	< 24"	+/- 45°	360°	90°	- 9" (monitor)/20 ^{1/2} " (keyboard)	
• FDPK02	25 lbs	1	< 24"	+/- 45°	360°	90°	- 9" (monitor)/20 ^{1/2} " (keyboard)	

ANALYSIS CHARTS



FLAT PANEL MOUNTS 32"-61": CEILING-MOUNTED

Model #	Length	Wt	Tilt	P/L Rotation	LCD(s)	LCD Wt	Mount Width Adjustment	Mount Height Adjustment
• FPCM-1-AL	see FPCMPOLE_	35 lbs	< 15°	360°	1	< 135 lbs	310mm-825mm	200mm-683mm
• FPCM-2-AL	see FPCMPOLE_	70 lbs	< 15°	360°	2	< 100 lbs total	310mm-825mm	200mm-683mm
• FPCMPOLE36-AL	36"	8 lbs	-	-	-			
• FPCMPOLE48-AL	48"	12 lbs	-	-	-			
• FPCMPOLE60-AL	60"	16 lbs	-	-	-			
• FPCMPOLE72-AL	72"	24 lbs	-	-	-			



FLAT PANEL MOUNTS 32"-61": WALL-MOUNTED

Model #	Monitor Size	Wt	Tilt	P/L Rotation	LCD Wt	Mount Width Adjustment	Mount Height Adjustment
• FPLM-ARM-AL	42-61"	35 lbs	< 15°	360°	< 170 lbs	310mm-825mm	200mm-683mm
• FPLM-FFP	23-42"	11 lbs	< 15°	Fixed	< 100 lbs	75mm-500mm	75mm-375mm
• FPLM-FFP2	42-61"	22 lbs	< 15°	Fixed	< 200 lbs	100mm-720mm	100mm-610mm



PROJECTOR MOUNTS: CEILING-MOUNTED

Model #	Arm Length	Pitch	Roll	Yaw	Wt
TPMUNI2	6"	10°	10°	360°	3 lbs
TPMUNI4	26-46"	10°	10°	360°	8 lbs