

LIBRARY SEATING



Grand Four-Leg Chairs

A HIGHER FORM OF FUNCTION



BRETFORD

INTRODUCING BRETTFORD'S NEWEST OFFERING OF LIBRARY SEATING. Manufactured by Holsag Canada and distributed by Bretford, these chairs come in a variety of styles and finishes. Finishes to match your Legacy Library furniture. Select a style that meets your needs and tastes.

TRADITIONAL FOUR-LEG CHAIR

The Traditional Four-Leg Chair is styled to the classic "Library" design. Details such as the elegant, slightly fanned back with six slats and decorative brackets on the edge of the seat give this chair a timeless design.



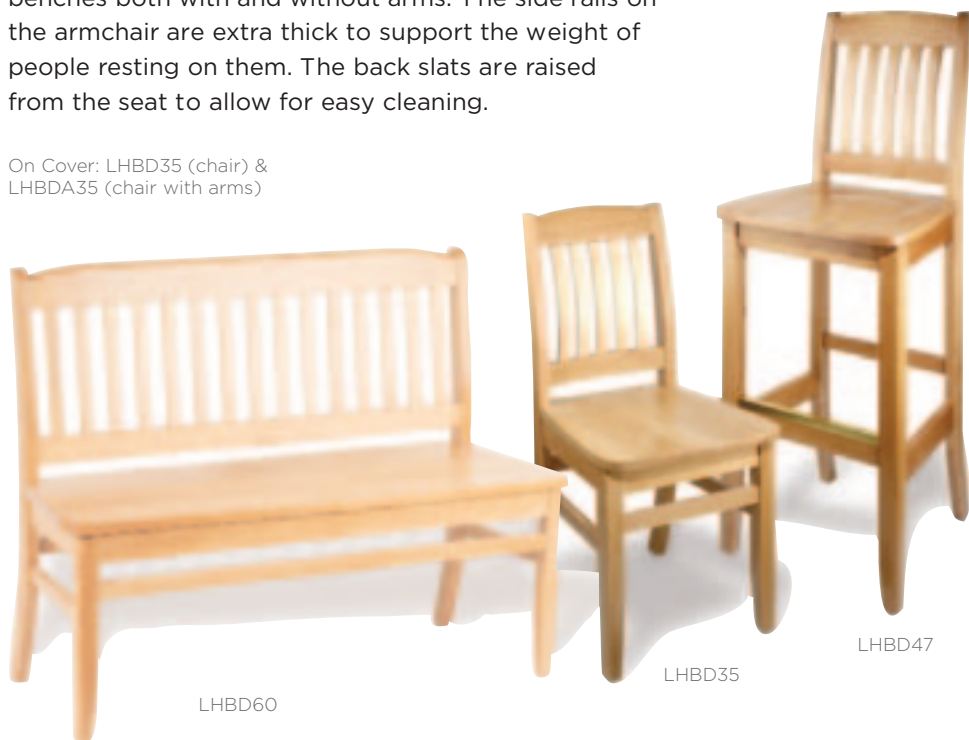
LHHY35

LHHY47

GRAND FOUR-LEG CHAIR

The Grand Four-Leg Chair is a sturdy chair line that includes a chair, armchair, matching barstool, and benches both with and without arms. The side rails on the armchair are extra thick to support the weight of people resting on them. The back slats are raised from the seat to allow for easy cleaning.

On Cover: LHBD35 (chair) & LHBDA35 (chair with arms)



LHBD60

LHBD35

LHBD47

DETAILS:

Comes in a standard 18"H seat chair or a 30"H seat barstool.

Constructed of 100% European Beech Hardwood and finished in any of Bretford's finishes using a nine-step finishing process.

Available with a wood seat or upholstered with fabric or vinyl.

Barstool comes with a protective brass-covered aluminum strip over the lower cross-bar to prevent the wood from wearing due to feet resting on it.

Chair comes with a 5-year warranty.

MODELS:

LHHY35 Traditional Chair

LHHY47 Traditional Stool

FINISH OPTIONS:



Natural Maple (OM2)

Sapeli (OS4)

Chau Cherry (OC8)

Fabric and Vinyl Options on page 4-6

DETAILS:

Comes in a standard 18"H seat chair or a 30"H seat barstool. Also available with arms on the 18"H seat chair.

Constructed of 100% European Beech Hardwood and finished in any of Bretford's finishes using a nine-step finishing process.

Available with a wood seat or upholstered with fabric or vinyl.

Barstool comes with a protective brass-covered aluminum strip over the lower cross-bar to prevent the wood from wearing due to feet resting on it.

Chair comes with a 5-year warranty.

MODELS:

LHBD35 Grand Chair

LHBD47 Grand Stool

LHBDA35 Grand Chair with arms

LHBD42 42"W Grand Bench

LHBDA42 42"W Grand Bench w/arms

LHBD60 60"W Grand Bench

LHBDA60 60"W Grand Bench w/arms

BASIC TWO-POSITION AND SLED-BASE CHAIR

The Basic Two-Position and Sled-Base Chairs are designed with a sled base that is durable and will withstand years of use. The Two-Position Chair stabilizes at an upright position as well as in a leaned back position. This flexibility provides comfort and safety when leaning back in the chair. The chair is built to withstand the distribution of weight at two points while the sled base design ensures the flooring will be preserved.



LHCPTP shown without upholstery



LHCPSB shown with upholstery

DETAILS:

Comes in a standard 18"H seat chair.

Constructed of 100% European Beech Hardwood and finished in three finishes using an eight-step finishing process.

Available with a wood seat and back or upholstered with fabric or vinyl.

Two-position design allows for movement while not damaging flooring or the chair.

Chair comes with a 10-year warranty.

Matches the Basic Stacking Chair.

MODEL:

LHCPSB	Sled-Base Chair
LHCPTP	Two-Position Chair

FINISH OPTIONS:



Natural Maple (CM2)

Fabric and Vinyl Options on page 4-6

BASIC STACKING CHAIR

The Basic Stacking Chair matches the Two-Position and Sled-Base Chairs to complete this line of school study chairs. The Stacking Chair, as with the Sled-Base Chair, is extremely durable yet comfortable, making them suitable for frequent, extended use.



LHCPSK

DETAILS:

Comes in a standard 18"H seat chair.

Constructed of 100% European Beech Hardwood and finished in three finishes using an eight-step finishing process.

Available with a wood seat and back or upholstered with fabric or vinyl.

Chairs stack easily for storage.

Chair comes with a 10-year warranty.

Matches the Basic Two-Position Sled-Base Chair.

MODELS:

LHCPSK	Basic Stacking Chair
--------	----------------------

WOOD STACKING CHAIR

The stylish, modern Wood Stacking Chair is unbeatable in its good value. This stacking chair is built to withstand constant use so it is suited for many high traffic areas such as schools, conference rooms and restaurants.



LHCLO18

FINISH OPTIONS:



Natural Maple (CM2)



Two-Tone (OT2)



DETAILS:

Comes in a four seat heights: 12", 14", 16" and 18".

Constructed of 100% European Beech Hardwood and finished in two finishes using an eight-step finishing process.

Available only in wood.

Chairs are lightweight and durable for use nearly anywhere

Chair comes with a 5-year warranty.

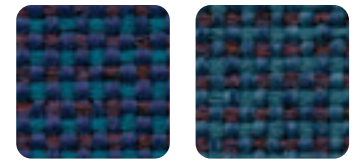
For 18" chair, finishes are Natural Maple and Two-Tone Black and Chau Cherry. For 12", 14" and 16", finish only available in Natural Maple.

MODELS:

LHCLO12	12"H Stacking Chair
LHCLO14	14"H Stacking Chair
LHCLO16	16"H Stacking Chair
LHCLO18	18"H Stacking Chair

FABRIC AND VINYL CHOICES.

All of Bretford's chairs can be ordered finished completely in wood or with upholstered seats and backs (except the Wood Stacking Chair which is not available with upholstery). Below is a complete list of approved fabrics and vinyl. Customer's Own Material (COM) may be used. A .36 yard of fabric is required for testing. See the COM form on page 7 for details.



Shire Jewel
(H323)

Shire Dragonfly
(H308)

FABRIC



Sherpa Grey
Mix (H522)



Shire Bonemist
(H694)



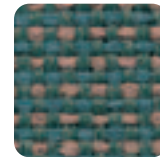
Shire Sesame
(H359)



Sherpa Willow
(H241)



Sherpa Romaine
(H461)



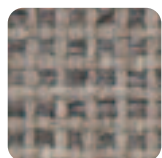
Shire Chive
(H663)



Shire
Hummingbird
(H616)



Sherpa
Academy Blue
(H531)



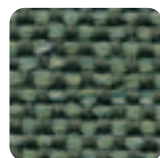
Shire Greystone
(H622)



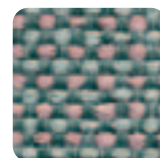
Shire Oyster
(H795)



Sherpa Gargolye
(H221)



Shire
Eucalyptus
(H312)



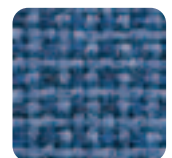
Shire Mint
Julep (H668)



Sherpa Teal
(H565)



Sherpa Brittany
(H503)



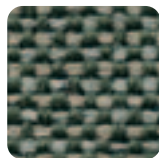
Shire
Commodore
(H654)



Sherpa Grey
Heather (H521)



Sherpa Brown
Haze (H541)



Shire
Plantation
(H376)



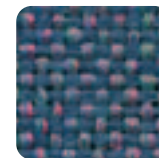
Shire Pine
(H664)



Sherpa Empress
(H563)



Shire Steel Blue
(H379)



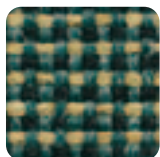
Shire Wild
Blue (H705)



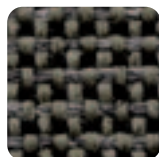
Sherpa Royal
(H538)



Shire Black
Marble (H623)



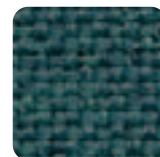
Shire Heath
(H613)



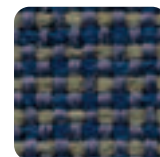
Shire Fossil
(H320)



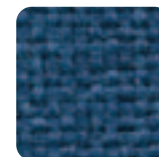
Sherpa Jade
(H564)



Sherpa Ivy
League (H462)



Shire Cottage
Purple (H304)



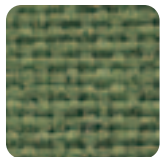
Sherpa Indigo
(H436)



Shire Midnight
(H620)



Shire Espresso
(H629)



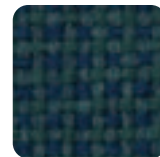
Sherpa Kiwi
(H650)



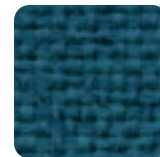
Shire Patina
(H350)



Sherpa Hunter
(H562)



Shire Green Bay
(H709)



Sherpa Hudson
Bay (H222)



Shire Ink
(H210)



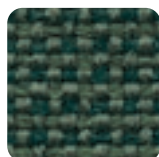
Sherpa Dark
Blue (H536)



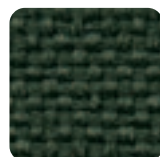
Sherpa Black
(H520)



Shire Rain
Forest (H604)



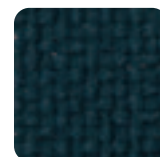
Shire Pesto
(H354)



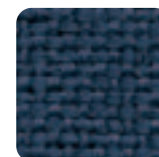
Sherpa Moss
(H225)



Sherpa Billiard
(H630)



Sherpa
Neptune
(H365)



Sherpa Navy
(H537)



Sherpa Special
Blue (H430)

FABRIC



Shire Herald
(H609)



Sherpa
Sugarplum
(H525)



Shire Nantucket
(H608)



Sherpa Rose
(H583)



Sherpa Mauve
(H527)



Sherpa
Burgundy
(H581)



Shire Orchid
(H693)



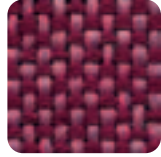
Sherpa Scarlet
(H576)



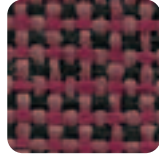
Sherpa
Prairie
(H515)



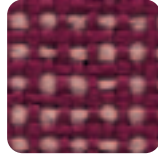
Sherpa
Berry
(H481)



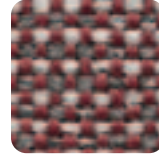
Shire Wild
Cherry (H679)



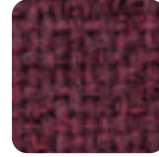
Shire Black
Cherry (H676)



Shire Valentine
(H686)



Shire Ascot
(H612)



Sherpa Grape
(H585)



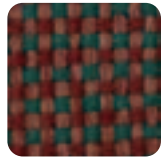
Sherpa Garnet
(H888)



Shire Cape Cod
(H767)



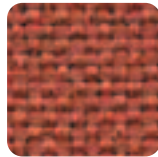
Shire Mesa
(H615)



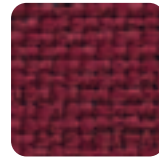
Shire Terrace
(H788)



Sherpa Cardinal
(H486)



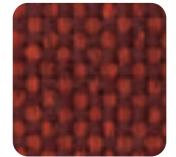
Sherpa
Terracotta
(H574)



Sherpa Maroon
(H582)



Shire Red
Rose (H871)



Shire
Strawberry
(H684)



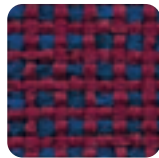
Shire Mystic
(H699)



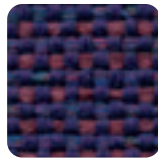
Shire Veranda
(H763)



Shire Flora
(H313)



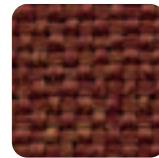
Shire Carmine
(H678)



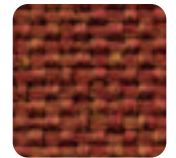
Shire Very
Berry (H393)



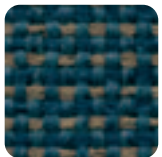
Sherpa Red
(H588)



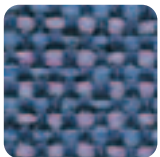
Sherpa Autumn
(H220)



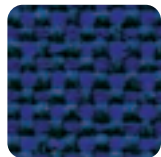
Sherpa Sparkler
(H236)



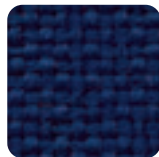
Shire Tuscan
Blue (H386)



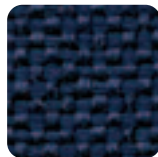
Shire Lobelia
(H736)



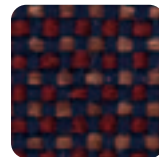
Shire Petunia
(H368)



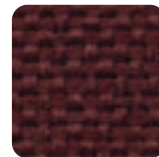
Sherpa Purple
Velvet (H227)



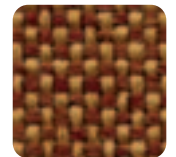
Sherpa True
Blue (H237)



Shire Country
(H743)



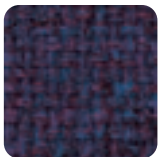
Sherpa
Rosewood
(H231)



Shire Nectar
(H330)



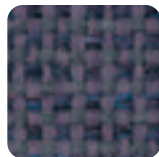
Sherpa
Jamboree
(H402)



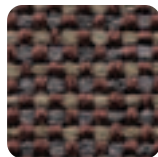
Sherpa Blue
Iris (H533)



Sherpa Concord
(H897)



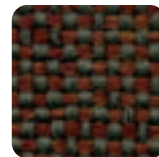
Shire Lavender
(H659)



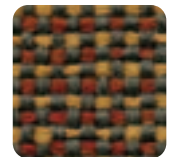
Shire Oxford
(H331)



Shire Frontier
(H315)



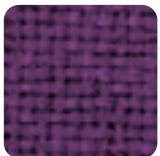
Shire Laurel
(H316)



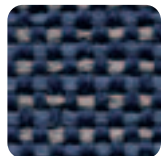
Shire
Marigold
(H329)



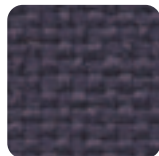
Shire Titan Blue
(H631)



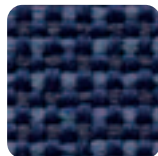
Sherpa Viola
(H853)



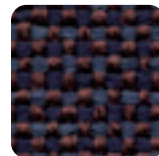
Shire Grey Lilac
(H322)



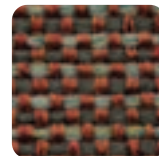
Sherpa Purple
Sage (H233)



Shire Amethyst
(H309)



Shire Regatta
Blue (H378)



Shire Tiger Lily
(H384)



Sherpa Amber
(H215)

VINYL

							
Forest (HM44)	Northwoods (HM528)	Yew Green (HM115)	Dark Nile (HM462)	Sun Yellow (HM43)	Golden Corn (HM524)	Nectar (HM542)	Mandarin Orange (HM72)
							
Olive Green (HM529)	Artichoke (HM527)	Celadon (HM13)	Aquamarine (HM754)	Royal Blue (HM54)	Sangria (HM506)	Raspberry (HM362)	American Beauty (HM60)
							
Wedgwood (HM15)	Grotto (HM106)	Turquoise (HM419)	Capri Blue (HM514)	Crocus (HM433)	Dusty Rose (HM068)	Cavalry (HM59)	Tomato (HM358)
							
Sky Blue (HM516)	Bristol Blue (HM515)	Space Blue (HM53)	Blue Jay (HM735)	Grape (HM509)	Mauve (HM63)	Bordeaux (HM102)	Sunset (HM521)
							
Ocean Grey (HM27)	Baltic Blue (HM761)	Purple Iris (HM766)	Deep Violet (HM511)	Wine (HM547)	Claret (HM57)	Rouge Red (HM505)	Candy Apple (HM17)
							
Blueberry (HM108)	Midnight Blue (HM52)	Imperial Blue (HM432)	Concord (HM510)	Ruby (HM9)	Terra Cotta (HM2)	Dark Cherry (HM507)	Cinnabar (HM520)
							
Purple Grey (HM29)	Plum (HM62)	Black Plum (HM76)	Bone (HM404)	Dove (HM11)	Burgundy (HM64)	British Tan (HM165)	Driftwood (HM548)
							
Snow White (HM14)	Oyster White (HM95)	Buff (HM104)	Cloud Grey (HM110)	Mushroom (HM962)	Tan (HM5)	Mocha (HM81)	Chestnut (HM75)
							
Chalk (HM22)	Pearl Grey (HM94)	Medium Grey (HM112)	Aqua Grey (HM28)	Greystone (HM425)	Black (HM93)	Gunmetal (HM92)	Espresso (HM83)

COM REGISTRATION FORM

Please register any Customer's Own Material (COM) with Bretford prior to sending your fabric sample. Simply fill out this application and fax it in to the Bretford COM specialist at 847.678.0852. The COM specialist will contact you by phone to issue a testing number.

All fabric must be tagged with a testing number OR this form must be attached to the sample. A .36 yard fabric sample is necessary for testing COM.

The fabric needs to be 54" wide. The yardage requirements may increase with larger repeats. Leather, plaid, striped, or patterned fabric is not recommended. Please note your preferred fabric direction at the bottom of this page. We will honor your request for pattern direction or contact you if it is not feasible.

The COM specialist will contact you with an approval number after the fabric has been tested. When you send in your roll goods to be upholstered, please tag them with the approval number.

It is important to tag with the testing or approval numbers for identification and tracking purposes. It will ensure that your order is accurate and delivered on time.

Send all material to:
Bretford / COM specialist
11000 Seymour Avenue
Franklin Park, IL 60131

YOUR NAME: _____

COMPANY: _____

TELEPHONE #: _____

EMAIL ADDRESS: _____

JOB/CLIENT NAME: _____

PRODUCT TO UPHOLSTER: _____

QUANTITY / DESCRIPTION: _____

BRETFORD ORDER # OR
YOUR PURCHASE ORDER #: _____

FABRIC MANUFACTURER: _____

FABRIC STYLE: _____

FABRIC COLOR: _____

PREFERRED FABRIC DIRECTION: _____



BRETFORD

1100 SEYMOUR AVENUE
FRANKLIN PARK, ILLINOIS 60131 USA
TOLL FREE PHONE 800-521-9614
PHONE 847-678-2545
TOLL FREE FAX 800-343-1779
FAX 847-678-0852

TECHNOLOGY HOUSE
7 LAKE END COURT, TAPLOW
BUCKS SL6 0JQ ENGLAND
PHONE 011 441 628 603 558
FAX 011 441 628 604 923

WWW.BRETFORD.COM