

## PC4

### 4" TWIN WHEEL CASTER PACK

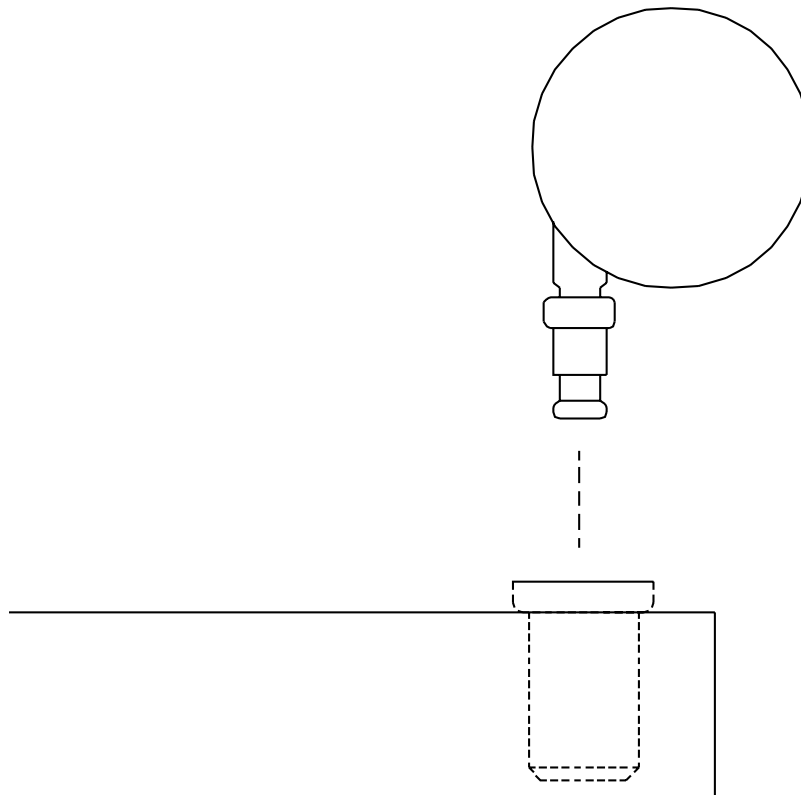
Double wheels of high impact thermoplastic. Casters are suitable for carpeted and tile floors. They are not intended to be used on rough, uneven surfaces or heavy-duty operations. If the product will be used on rough or uneven surfaces for heavy-duty operations, 4" or 5" rubber casters should be utilized.

#### PARTS LIST

Qty	Part#	Description
2	015-0093	4" Twin Wheel Caster w/ Brake
2	015-0094	4" Twin Wheel Caster w/o Brake

#### TOOLS REQUIRED

Rubber Mallet



Remove old casters by either pulling them out or gently tapping them out. Push new caster into each insert by hand. If caster does not go in easily, lightly tap caster with rubber mallet. Once all casters are **SECURELY** in place, stand unit upright.

**Bretford**  
 11000 Seymour Avenue  
 Franklin Park, IL 60131  
 TEL: 847.678.2545  
 800.521.9614  
 FAX: 847.678.0852  
 800.343.1779

**Bretford Ltd.**  
 Technology House  
 7 Lake End Court, Taplow  
 Bucks SL6 0JQ England  
 TEL: 01628 603558  
 FAX: 01628 604923