



# BRETFORD

## TCP CASTER PACK

### Assembly Instructions

#### PARTS LIST

Qty	Part#	Description
2	015-0054	2" Caster w/ Brake
2	015-0055	2" Caster w/o Brake
4	012-0152	Black Caster Insert

#### TOOLS REQUIRED

Claw Hammer  
Rubber Mallet

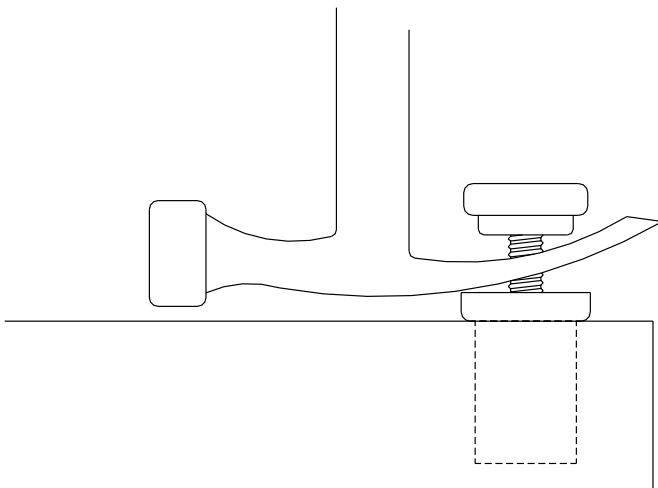


FIGURE 1

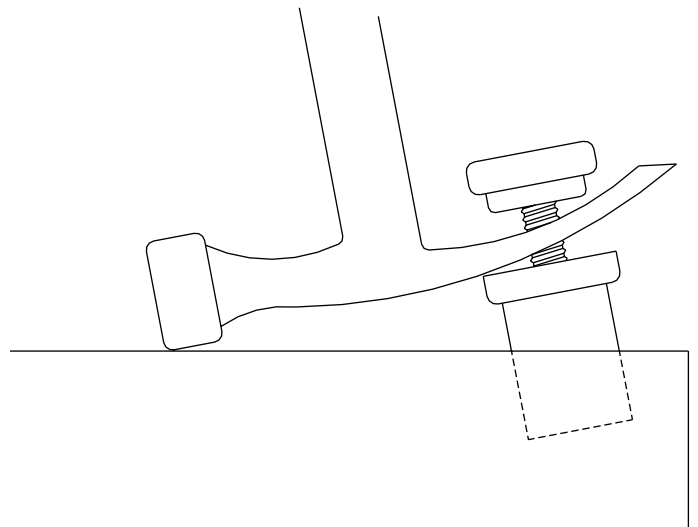
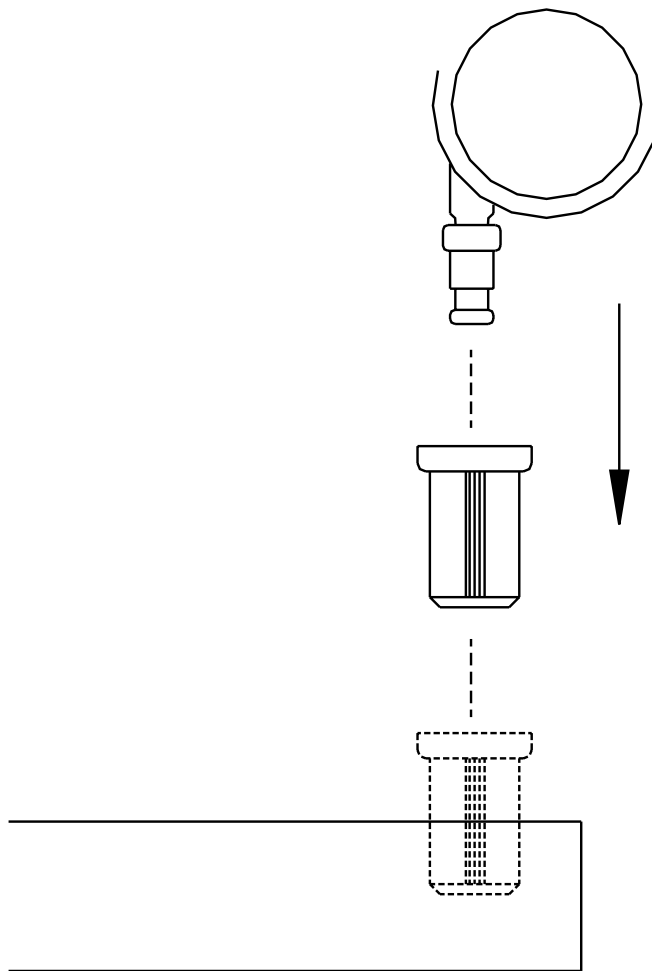


FIGURE 2

#### STEP 1

To remove glide and socket from bottom of pedestal, turn unit over. Unscrew glide far enough to get claw hammer in between the glide and the socket as shown in **FIGURE 1**. Make sure some glide threads are still in the socket, so that the socket will come out with the glide. **NOTE:** Place a piece of cardboard between pedestal and hammer, so you will not cause damage to the pedestal. **Use claw hammer to release the glide and the socket from unit as shown in FIGURE 2.**



## STEP 2

To install caster insert and caster, push caster insert in leg as far down as possible by hand. Support leg with something solid and tap caster insert into leg with a rubber mallet or hammer. Push caster into insert by hand. If caster does not go into insert easily, lightly tap caster with rubber mallet or hammer. Once all casters are in place, stand unit upright.

**Bretford**  
11000 Seymour Avenue  
Franklin Park, IL 60131  
TEL: 847.678.2545  
800.521.9614  
FAX: 847.678.0852  
800.343.1779

**Bretford Ltd.**  
Technology House  
7 Lake End Court, Taplow  
Bucks SL6 0JQ England  
TEL: 01628 603558  
FAX: 01628 604923

[www.bretford.com](http://www.bretford.com)

Part #031-0595  
Rev. 10.02.97