

PRESENTATION ENVIRONMENTS TABLES::POWER OPTIONS

By following our simple step-by-step guide, you can easily determine how many circuits are required to ensure the electrical equipment you order is safe. Tables featured in this guide have separate raceways for voice and data wires and meet Category 5 Performance Requirements. Data receptacles on our powerhouses are .79"W x .59"D and utilize the Tyco Electronics 110 connect series jacks. For a list of Tyco Electronics distributors in your area, call the Tyco Electronics Information Center at 800.522.6752. Electrical components are UL-Listed and manufactured in accordance with National Electrical Code requirements. Certain cities and municipalities may have additional requirements. **Hardwire systems must be installed by a licensed electrician.**

FIGURE OUT HOW MANY AMPS YOU WILL BE RUNNING

An amp is a unit of measure that tells how much electricity a machine is drawing from an electrical system. On your computer or electrical device, locate the faceplate that describes the machine's technical features. The amps are usually displayed like this: INPUT: 120 V - 1.8 A. If you cannot find this information on the machine, it may be located in the owner's manual.

CALCULATE THE TOTAL NUMBER OF AMPS PER POWERED SERIES

A powered series is the total number of amps from which you will be drawing power off of one power feed. In our case, it could be a row of tables joined together or a single conference table with many power receptacles. Add up the number of amps for each machine being powered off the series. Please note that all equipment is different and will vary by machine.

DIVIDE BY 16

Although each circuit is rated for 20 amps of intermittent use, most computers and machinery in an office or school environment are used continually for many hours. In this type of situation, the National Electrical Code restricts the circuits to 16 amps of continuous use. So, divide the sum of the amps by 16.

DETERMINE THE NUMBER OF CIRCUITS YOUR POWER SERIES REQUIRES

In most cases, the number determined in STEP 3 will be a decimal. Round up to the next whole number, which will be the number of circuits required to run your equipment safely. If the number you arrived at is greater than four (the maximum number of circuits the system will handle), you will have to decrease some of the power being used on this system or create another system with a new power feed.

REPEAT STEPS FOR EACH REMAINING POWERED SERIES

This would apply if you have multiple rows of training/computer tables or another conference table. Remember, you must go through this process for each system that runs off its own power feed.

Now that we know how many circuits each powered series will need, let's see how it applies to different types of Bretford tables.

Bretford's 8-wire, 4-circuit system uses duplex receptacles (each duplex has two power outlets) to determine from which circuit the electrical equipment will draw power. The receptacles are marked 1, 2, 3, or 4 to designate the circuit that is activated when it is installed into the power harness. Circuits 1, 2, and 3 all share a common ground while circuit 4 has a separate ground of its own and a neutral wire. This makes circuit 4 perfect for more sensitive equipment, like printers and network servers.

If your system requires two circuits, specify duplexes 1 and 2 along the entire system to access those specific circuits.

Here is an example of what a 2-circuit system will require:

- (1) 144"W x 48"D Racetrack Conference Room Table with two (2) Power Doors
- (1) 120"W Conference Table Power Harness Pack
- (2) Duplex Circuit 1
- (2) Duplex Circuit 2

Here is an example of what a 4-circuit system will require:

- (1) 192"W x 54"D Racetrack Conference Room Table with four (4) Power Doors
- (1) 192"W Conference Table Power Harness Pack
- (2) Duplex Circuit 1
- (2) Duplex Circuit 2
- (2) Duplex Circuit 3
- (2) Duplex Circuit 4

NOTE: All powered tables come standard equipped with data and communication support raceways. Bretford does not offer data jacks. Therefore, they must be purchased separately.

NOTE: When hardwire or softwire electrical options are ordered, four electrical outlets and four data outlets will be placed under each door.

NOTE: Electrical components cannot be returned.



HOW TO ORDER POWER: HARDWARE

STEP 1 - SPECIFY TABLE

Determine the width, length, and shape of the conference table.


Standard widths:
42", 48", 54"

Standard lengths:
96", 120", 144"
168", 192", 240"

NOTE: Must be installed by a licensed electrician.

STEP 2 - SELECT THE NUMBER OF POWER DOORS REQUIRED



Choose zero doors, one door, two doors, or four doors for conference tabletop. (The doors are painted the same color as the base.)

NOTE: One power door is available only on 72"W and 84"W rectangle and racetrack conference tables.

STEP 3 - LOCATE THE MODEL NUMBER



Sample table order code:
PRAB416H
Model No.

TABLES: CONFERENCE TABLES

PRESENTATION ENVIRONMENTS TABLES::POWER OPTIONS



- Hardwire power feed, one harness, and one cover plate are included. Will need to purchase duplexes.

1-DR Hardwire Power Harness Pack

Model #	Table Length	Wt	List Price
EHS7284	72" or 84"	11 lbs	\$518

HARDWIRING STEP 1



- Hardwire power feed, two harnesses, one jumper, and two cover plates are included. Will need to purchase duplexes.

2-DR Hardwire Power Harness Pack

Model #	Table Length	Wt	List Price
EHS096DB	96"	14 lbs	\$1,035
EHS120DB	120"	16 lbs	\$1,035
EHS144DB	144"	19 lbs	\$1,035
EHS168DB	168"	19 lbs	\$1,035
EHS192DB	192"	23 lbs	\$1,035
EHS240DB	240"	25 lbs	\$1,035

HARDWIRING STEP 1



- Hardwire power feed, four harnesses, three jumpers, and four cover plates are included. Will need to purchase duplexes.

4-DR Hardwire Power Harness Pack

Model #	Table Length	Wt	List Price
EHS168QD	168"	42 lbs	\$2,327
EHS192QD	192"	46 lbs	\$2,327
EHS240QD	240"	42 lbs	\$2,327

HARDWIRING STEP 1



- Y-connector splits power so the hardwire infeed can travel up the center leg of the conference table.

Y-Connector

Model #	Wt	List Price
EHSY	2 lbs	\$286

HOW TO ORDER POWER: HARDWIRE (8-WIRE, 4-CIRCUIT)

STEP 1 - HARDWIRE



Hardwire order code:
EHS168DB
Model No.

The solution for heavy power use requires multiple circuits. Specify the power system according to the length of the table and the number of doors on the table.

STEP 2 - SPECIFY (2) DUPLEXES FOR EACH POWER DOOR



DUPLC11 (circuit 1)
DUPLC22 (circuit 2)
DUPLC33 (circuit 3)
DUPLC44 (circuit 4)
(separate dedicated circuit)

HOW TO ORDER POWER: SOFTWARE

STEP 1 - SOFTWARE (SURGE PROTECTED POWER STRIP)

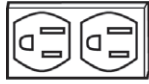


Software order code:
SPPSDB
Model No.

The solution for light-to-moderate power use requires an outlet for each door on a table.

NOTE: Must be installed by a licensed electrician.

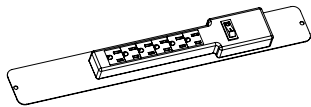
PRESENTATION ENVIRONMENTS TABLES::POWER OPTIONS



Duplex - Circuit

Model #	Wt	List Price
DUPLC11	1 lbs	\$29
DUPLC22	1 lbs	\$29
DUPLC33	1 lbs	\$29
DUPLC44	1 lbs	\$29

HARDWIRING STEP 2

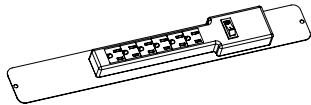


! Requires one wall or floor outlet for one door table.

6-Outlet Surge Protected Electrical Unit - One Door Software

Model #	Description	Wt	List Price
SPPSSI	6 outlets with 20' cord	5 lbs	\$151

SOFTWIRING STEP 1

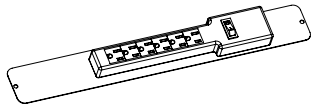


! Requires two wall or floor outlets for two door table.

6-Outlet Surge Protected Electrical Unit - Two Door Software

Model #	Description	Wt	List Price
SPPSDB	6 outlets with 20' cord (Set of 2)	8 lbs	\$341

SOFTWIRING STEP 1

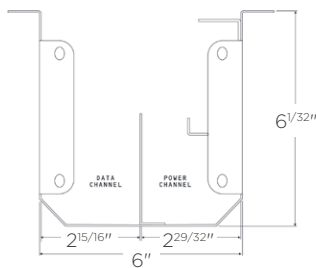


! Requires four wall or floor outlets for four door table.

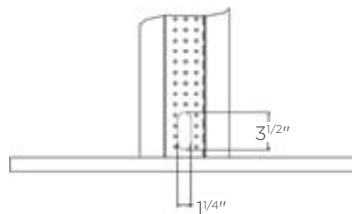
6-Outlet Surge Protected Electrical Unit - Three Door Software

Model #	Description	Wt	List Price
SPPSQD	6 outlets with 20' cord (Set of 4)	22 lbs	\$676

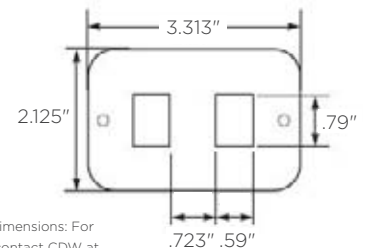
SOFTWIRING STEP 1



Cross section of power and data channels underneath tabletop.



Entry grommet of table leg for power and data wiring.



Data plate dimensions: For data ports, contact CDW at 800.750.4239. Request the 110 Connect Series Jacks and provide the dimensions listed.

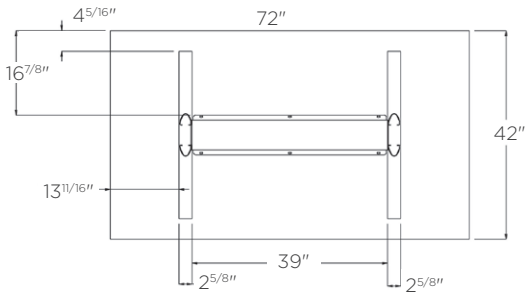
RJ45 = Data
RJ11 = Phone

TABLES: CONFERENCE TABLES

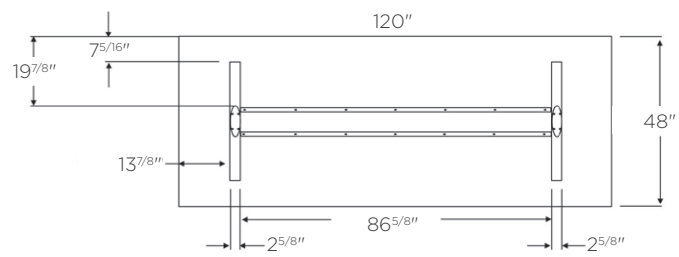
PRESENTATION ENVIRONMENTS TABLES::POWER OPTIONS

The following conference table dimensions are provided to help you determine placement of the core holes in the floor for electric power and data connections. The core hole should be placed near the inside of the outboard legs. The leg and base placement underneath the top is consistent throughout the conference table series. Locate your conference table using the depth and width of the table you have chosen. Although your table may have a different tabletop shape than the image shown, the core hole placement will be the same.

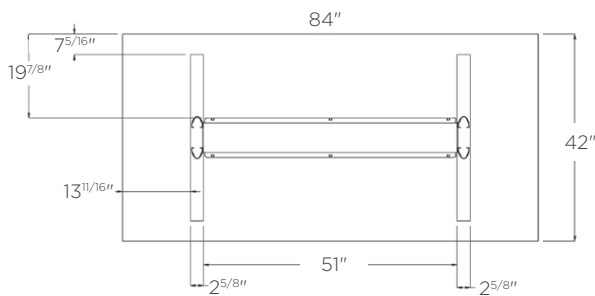
72"W x 42"D (Zero or One Power Door)



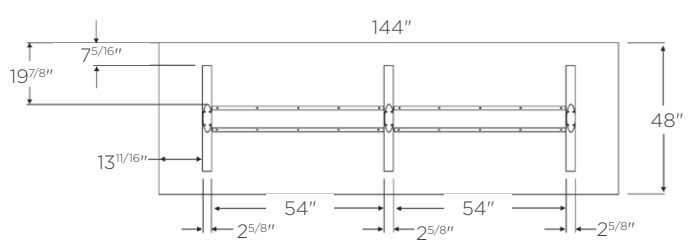
120"W x 48"D (Zero or Two Power Doors)



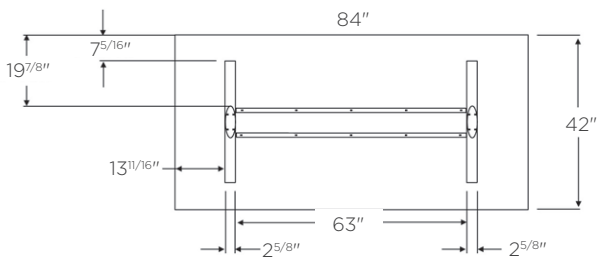
84"W x 42"D (Zero or One Power Door)



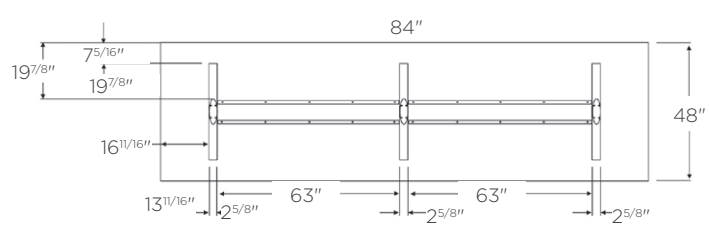
144"W x 48"D (Zero or Two Power Doors)



96"W x 48"D (Zero or Two Power Doors)

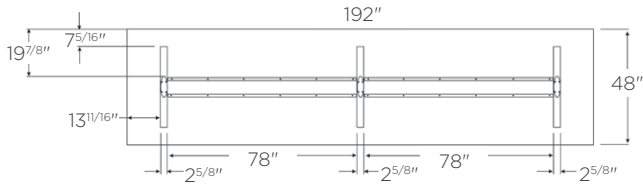


168"W x 48"D (Zero, Two, or Four Power Doors)

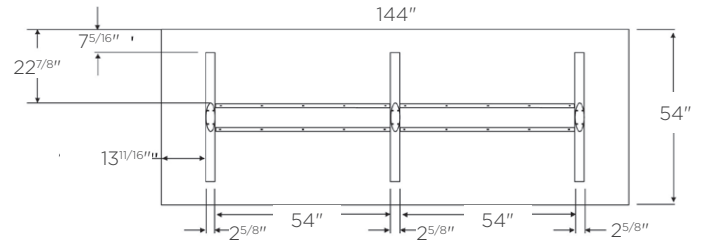


PRESENTATION ENVIRONMENTS TABLES::POWER OPTIONS

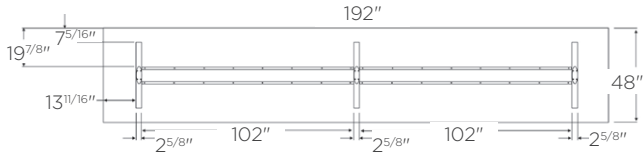
192"W X 48"D (Zero, Two, or Four Power Doors)



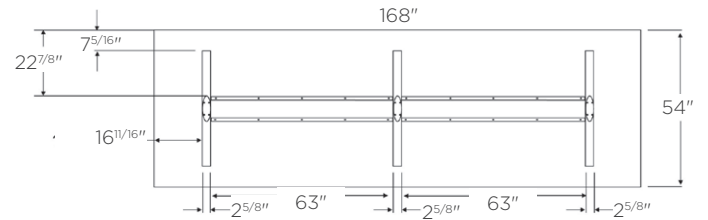
144"W X 54"D (Zero or Two Power Doors)



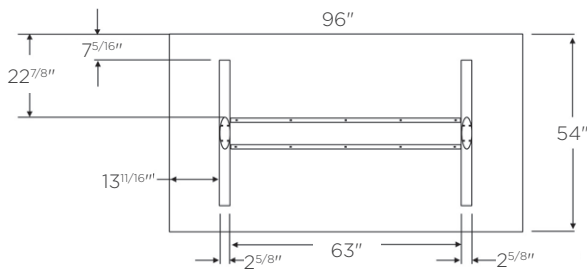
240"W X 48"D (Zero, Two, or Four Power Doors)



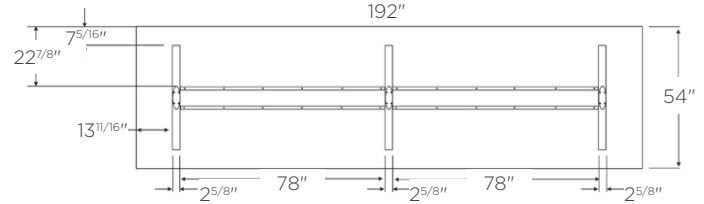
168"W X 54"D (Zero, Two, or Four Power Doors)



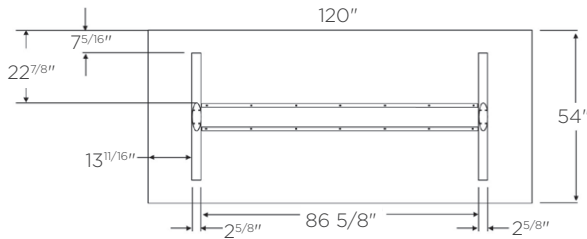
96"W X 54"D (Zero or Two Power Doors)



192"W X 54"D (Zero, Two, or Four Power Doors)



120"W X 54"D (Zero or Two Power Doors)



240"W X 54"D (Zero, Two, or Four Power Doors)

