

BRETFORD BASICS™

CONNECTIONS CORNER TABLE

Maximize the unused space in any room with the Connections Corner Table. Group four together to design a learning cluster in the center of a room. The height adjustable table holds a CPU, monitor and keyboard. Features a hinged cord management bin, modesty panel and adjustable glides.



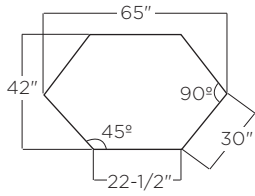
FEATURES

- Attractive Grey laminate tabletop trimmed with one of four colored T-mold edge bands, Quartz grey, Cardinal red, Polo green, or Topaz blue. Also available by special order in any paint, trim and laminate offered by Bretford.
- Spacious work surface holds computer system, mouse and reference materials.
- Fits neatly in the corner of a room, ideal for a single user situation or to create right angles with 30"D Connections Work Centers.
- 14-gauge sturdy steel base is constructed with 30% post-consumer recycled steel and features a unique "Y" shape design.
- Complies with the GREENGUARD Environmental Institute's GREENGUARD Children & Schools Indoor Air Quality standards, contributing to points toward Leadership in Energy and Environmental Design (LEED) Certification.
- Adjustable in one inch increments from 24" to a 32" for use by children or adults.
- Cord management bin and grommet hole hide and organize electrical cords. Cord bin is set back 16" from the front edge of the table.
- Tops feature metal threaded inserts on the underside to attach the leg assemblies to for a metal to metal connection that adds strength and greatly reduces the possibility screws will strip or fall out over time.
- Combine four or more corner tables together to fit around a building column or to form a roomy instruction and training center.
- Floor-saving, adjustable glides included.
- Available in any standard Bretford paint, trim and laminate finish by special order.
- Made in the USA.



OVERALL DIMENSIONS

65" w x 42" d x 24-32" h

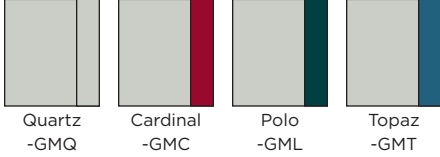


STANDARD COLOR/FINISH

Base/Tabletops: Grey powder paint/Grey laminate

Trim, Toe Caps & Grommet Holes: Available in Cardinal (GMC),

Topaz (GMT), Polo (GML) and Quartz (GMQ)



STANDARD EQUIPMENT

Table top (1)

Right leg assembly (1)

Left leg assembly (1)

Modesty panel (1)

Cord management bin (1)

Glide Pack (4)

ACCESSORIES

ECF6	Computer furniture 6-outlet power strip
UCSKD-GM	Keyboard Drawer for 96"W tables
35CPUHRN-GM	Standard CPU Tower Leg Harness
35MTCHRN-GM	Slim CPU Tower Leg Harness

WEIGHT AND FREIGHT CLASS

94 pounds, Freight class 70

Ships ready to assemble.

CARTON DIMENSIONS & UPC CODES

49-1/4" l x 48-3/4" w x 6-1/4" d

3511-GMQ: 96633 16088

3511-GMC: 96633 14954

3511-GMT: 96633 14955

3511-GML: 96633 14956

SUGGESTED SPECIFICATIONS

Model 3511 measures 65" w x 42" d x 24-32" h. Table top is made from 1" thick laminate furniture board, 45 pound density. Metal threaded inserts are installed into the underside of each top so the base is attached with a metal to metal connection. Upright and bottom bar of base constructed from 1" x 1-3/4" 14-gauge steel tube. The "V" shape of leg constructed from 1" square 18-gauge steel tube welded to 14-gauge steel top support. The cord management bin is constructed from 20-gauge steel and measures 4" h x 5-3/8" d. It runs the width of the table, allowing space for optional shelves to be attached. One side is attached with hinges to the back of the modesty panel and the other side, shall close with your choice of a thumb screw or theft proof screw (included) which attaches to the bottom of the work surface. There is one grommet hole measuring 1-1/2" x 4" centered on the work surface. The legs are finished in an environmentally friendly Grey Mist powder painted. Modesty panel is constructed from 18 gauge steel. Table shall be GREENGUARD INDOOR AIR QUALITY CERTIFIED®. All steel parts are constructed with "prime" steel which has a 25% to 35% post-consumer recycled content. Legs are adjustable from 24-32" h. Models come with adjustable glides. These models ship ready to assemble in one carton pack measuring 49-1/4" x 48-3/4" x 6-1/4".

MADE IN THE USA

All Connections series tables are made at one of Bretford's Chicago area manufacturing facilities using union labor.



11000 SEYMOUR AVENUE
FRANKLIN PARK, ILLINOIS 60131 USA
TOLL FREE PHONE 800-521-9614
PHONE 847-678-2545
TOLL FREE FAX 800-343-1779
FAX 847-678-0852
WWW.BRETTFORD.COM