

BRETFORD BASICS™

CONNECTIONS INSTRUCTION CENTERS

The Connections Instruction Centers accommodate all ages with adjustable heights; adult height tables are trapezoid shaped thus allowing them to be placed against a wall or back to back for a learning cluster.



FEATURES

- Attractive 1" thick Grey Mist laminated tabletop trimmed with an edgeband in your choice of 4 colors, matching Quartz grey, Cardinal red, Topaz blue, or Polo green. Also available by special order in any paint, trim or laminate offered by Bretford.
- Choice of 80" or 96" wide to accommodate up to three microcomputer systems.
- The 3589-GM and 3579-GM feature a top shelf for additional storage. Top shelf is independently height adjustable from 16-26" above the worksurface.
- Ample leg room for each user.
- Worksurface is height adjustable from 20-32" to accommodate nearly any user.
- Spacious cord management bin and cut-out conceal and organize electrical cords.
- Optional 6-outlet ECF6 electrical unit or 12-outlet E12 electrical unit can be mounted inside the cord bin or to the underside of the worksurface.
- Optional UCSKD-GM keyboard drawers may be mounted to 96" wide Instruction Centers. 80" wide Instruction Centers are not suitable for mounting a keyboard drawer to.
- 14-gauge sturdy steel base is constructed with 30% post-consumer recycled steel and features a unique "Y" shape design and floor-saving, adjustable glides.
- Tops feature metal threaded inserts on the underside to attach the leg assemblies to for a metal to metal connection that adds strength and greatly reduces the possibility screws will strip or fall out over time.
- Complies with the GREENGUARD Environmental Institute's GREENGUARD Children & Schools Indoor Air Quality standards, contributing to points toward Leadership in Energy and Environmental Design (LEED) Certification.
- Base is finished with environmentally-safe Grey Mist powder paint.
- Made in the USA.

A HIGHER FORM OF FUNCTION



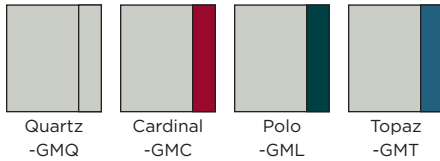
BRETFORD

OVERALL DIMENSIONS

3548-GM_	80"w x 34-1/2"d x 20-32"h
3408-GM_	96"w x 41-1/4"d x 20-32"h
3589-GM_	80"w x 34-1/2"d x 20-32"h
	Top Shelf: 57-3/4"w x 18-3/4"d x 16-26"h
3579-GM_	96"w x 41-1/4"d x 20-32"h
	Top Shelf: 68-1/2"w x 23-1/2"d x 16-26"h

STANDARD COLOR/FINISH

Base/Tabletops: Grey powder paint/Grey laminate
 Trim, Toe Caps & Grommet Holes: Available in Cardinal (GMC),
 Topaz (GMT), Polo (GML) and Quartz (GMQ)



STANDARD EQUIPMENT

- Table top (1)
- Shelf top (1) on 3589-GM and 3579-GM
- Leg Assembly (1)
- Shelf Assembly (1)
- Cord Organizer Cover (1)
- Cord Organizer Back Plate (1)
- Glide Pack (4)

ACCESSORIES

- ECF6 6-outlet computer furniture power strip
- E12 12-outlet computer furniture power strip
- UCSKD-GM Keyboard Drawer for 96"W tables



WEIGHT AND FREIGHT CLASS

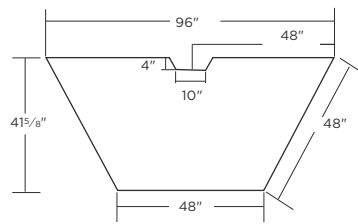
- Model 3548-GM_ 132 pounds, Freight class 70
Ships ready to assemble in one box
- Model 3508-GM_ 164 pounds, Freight class 70
Ships ready to assemble in two boxes
- Model 3589-GM_ 178 pounds, Freight class 70
Ships ready to assemble in four boxes
- Model 3579-GM_ 228 pounds, Freight class 70
Ships ready to assemble in four boxes

SUGGESTED SPECIFICATIONS

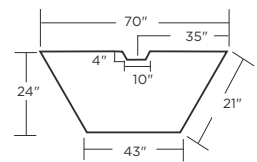
Model 3508-GM and 3579-GM have overall Instruction Center dimensions of 96"w x 41-1/4"d x 20"-32"h and the 3579-GM shelf has dimensions of 78-3/8"w x 23-1/2"d x 16-26"h. Model 3548-GM and 3589-GM have overall Instruction Center dimensions of 80"w x 34-1/2"d x 20-25"h and the 3589-GM shelf has dimensions of 57-3/4"w x 18-3/4"d x 16"-26"h. Table top is made from 1" thick laminate furniture board, 45-pound density. Metal threaded inserts are installed into the underside of each top so the base is attached with a metal to metal connection. Leg assemblies are constructed from 14-gauge steel and are finished with powder paint. The Cord Organizer Plate and Cover are both constructed from 18-gauge steel. All steel parts are constructed with "prime" steel which has a 25% to 35% post-consumer recycled content. Table shall be GREENGUARD INDOOR AIR QUALITY CERTIFIED. Work surface measurements are 96"w x 41-1/4"d x 20-32"h on the 3508 and 3579, and 80"w x 34-1/2"d x 20-32"h on the 3548 and 3589. Model has a Grey Mist finish with adjustable glides and your choice of four edgeband colors. This model ships ready-to-assemble in two carton packs.

MADE IN THE USA

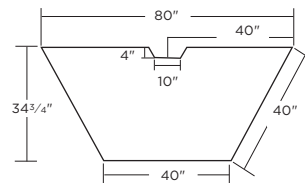
All Connections series tables are made at one of Bretford's Chicago area manufacturing facilities using union labor.



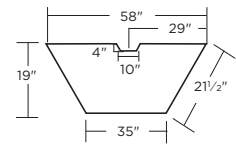
96"W INSTRUCTION CENTER
(3508-GM_)



TOP SHELF FOR 96"W
INSTRUCTION CENTER
(3579-GM_)



80"W INSTRUCTION CENTER
(3548-GM_)



TOP SHELF FOR 80"W
INSTRUCTION CENTER
(3589-GM_)



11000 SEYMOUR AVENUE
 FRANKLIN PARK, ILLINOIS 60131 USA
 TOLL FREE PHONE 800-521-9614
 PHONE 847-678-2545
 TOLL FREE FAX 800-343-1779
 FAX 847-678-0852
 WWW.BRETTFORD.COM